

# One Earth Solar Farm

**Volume 6.0 Environmental Statement [EN010159]**

**Volume 3**

**Figure 18.1: Biodiversity Spatial Zone of Influence**

**Figure 18.2: Hydrology Spatial Zone of Influence**

**Figure 18.3: Land and Soils – Land and Groundwater Spatial Zone of Influence**

**Figure 18.4: Land and Soils – Soils and BMV Spatial Zone of Influence**

**Figure 18.5: Cultural Heritage and Landscape and Visual Spatial Zone of Influence**

**Figure 18.6: Air Quality Spatial Zone of Influence**

**Figure 18.7: Noise and Vibration Spatial Zone of Influence**

**Figure 18.8: Human Health and Socio-Economics Spatial Zone of Influence**

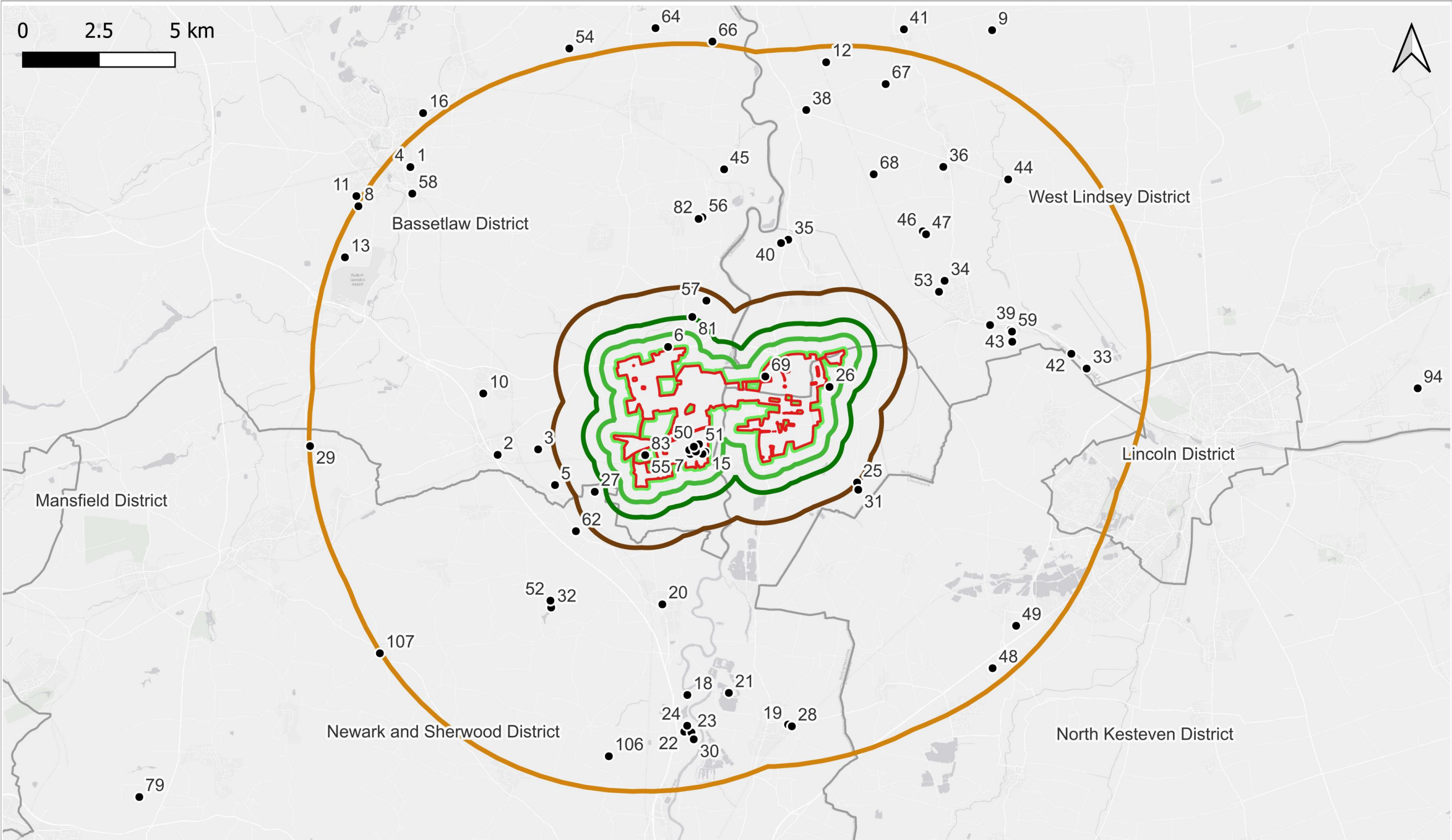
**Figure 18.9: Best and Most Versatile (BMV) Agricultural Land and Other Developments**

**August 2025**

Document Reference: EN010159/APP/6.20.1

Revision 02

Infrastructure Planning (Applications: Prescribed Forms and Procedure) Regulations 2009  
- Reg 5 (2) (a)

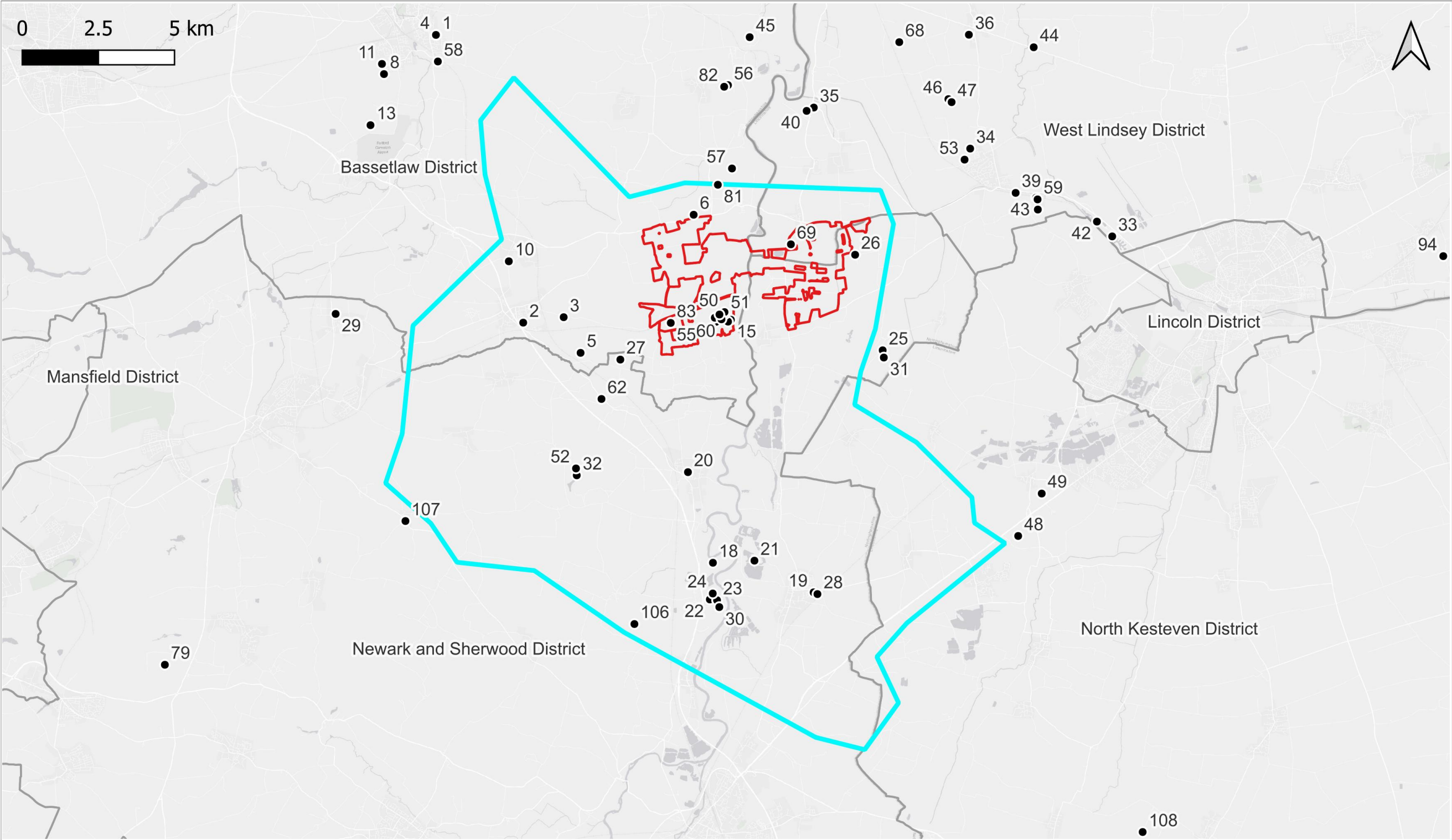


Client:	One Earth Solar Farm Ltd
Project:	One Earth Solar Farm
Planning Inspectorate Scheme Ref:EN010159	
Environmental Statement Volume 2	

Drawing Title:	Figure 18.1: Biodiversity Spatial ZOI	
Drawing Number:	EN010159/APP/6.20/18.1	Rev: 02
Drawn Date:	2025-08-08	

Legend:	
● Other Developments	
■ Biodiveristy - Habitats ZOI (50m)	
■ Biodiveristy - Waterbodies and water courses ZOI (500m)	
■ Biodiveristy - Veteran Trees ZOI (1km)	
■ Biodiveristy - Statutory Designated Sites, Non-Statutory Designated Sites, Priority Habitats, Legally protected and notatble species ZOI (2km)	
■ Biodiveristy - International/ European Sites ZOI (10km)	
■ Red Line Boundary	
■ District Boundaries	





Client:  
One Earth Solar Farm Ltd

Project:  
One Earth Solar Farm

Planning Inspectorate Scheme Ref:EN010159  
Environmental Statement Volume 2

Drawing Title:  
Figure 18.2: Hydrology Spatial ZOI

Drawing Number:  
EN010159/APP/6.20/18.2

Drawn Date:  
2025-08-08

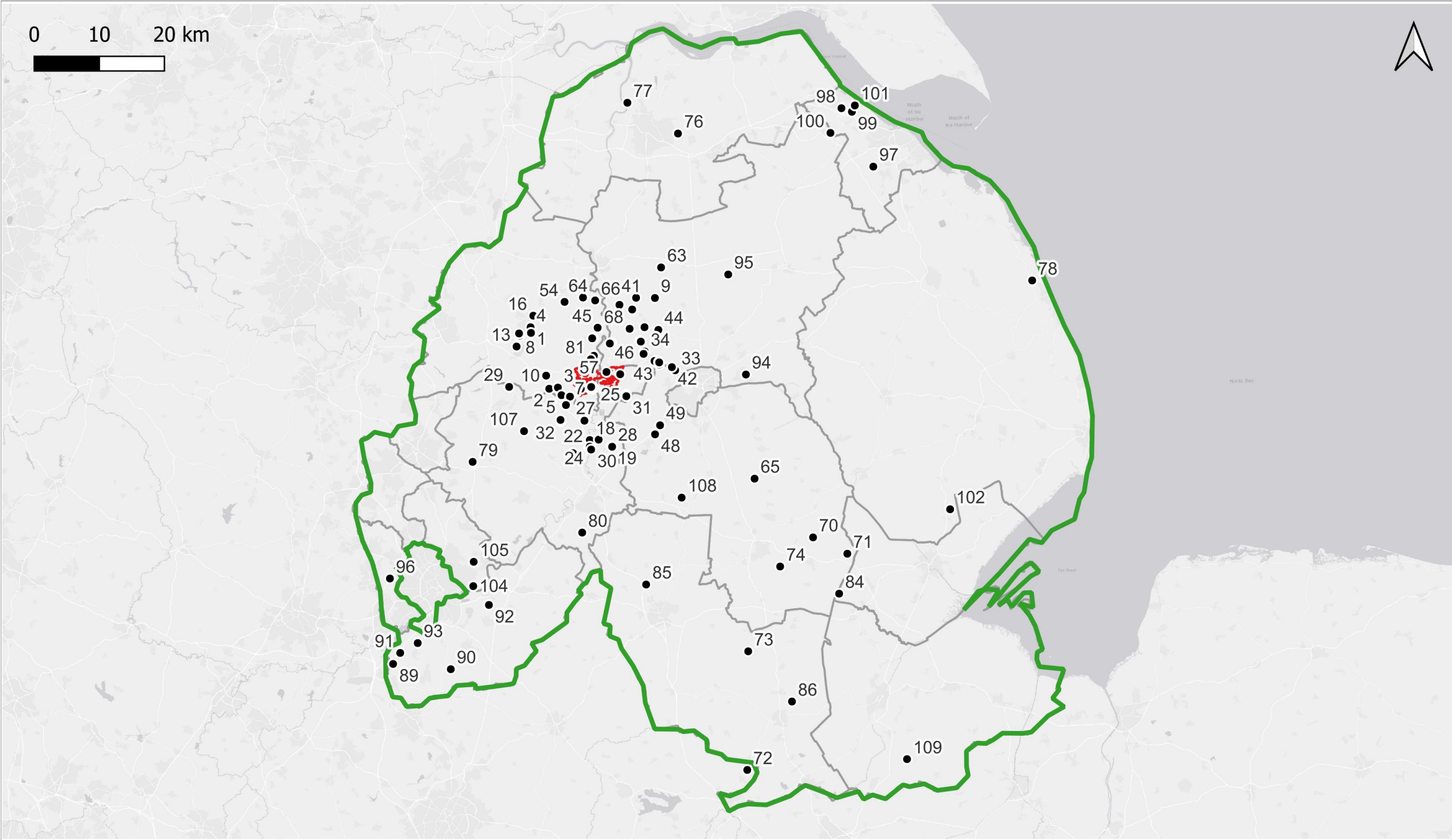
Rev:  
02

- Legend:
- Other Developments
  - ▭ Hydrology ZOI
  - ▭ Red Line Boundary
  - ▭ District Boundaries









Client:  
One Earth Solar Farm Ltd

Project:  
One Earth Solar Farm

Planning Inspectorate Scheme Ref:EN010159  
Environmental Statement Volume 2

Drawing Title:  
Figure 18.4: Soils and BMV  
Spatial ZOI

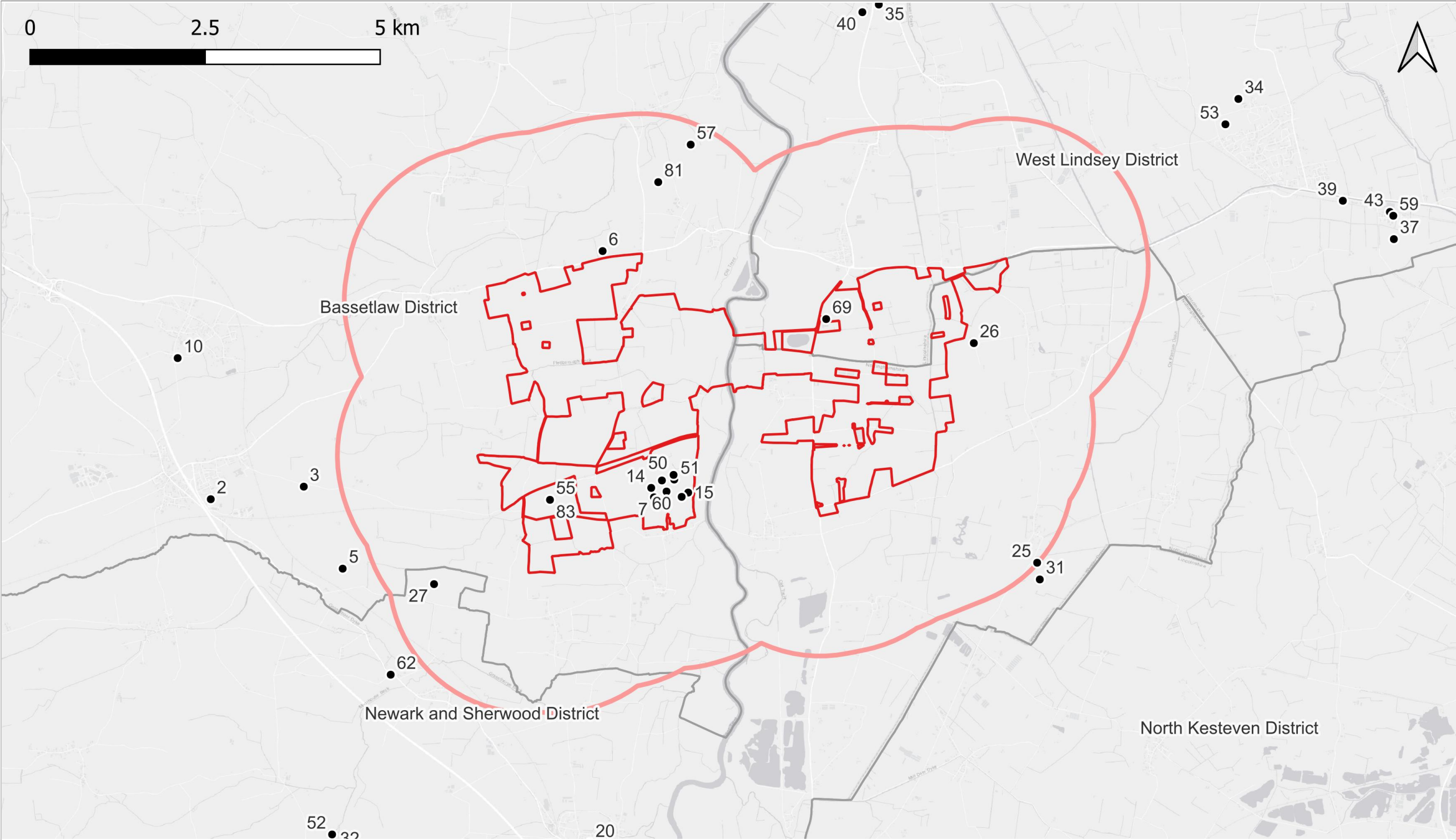
Drawing Number:  
EN010159/APP/6.20/18.4

Drawn Date:  
2025-08-08

Rev:  
02

- Legend:
- Other Developments
  - Land and Soils - Soils and BMV ZOI
  - ▭ Red Line Boundary
  - ▭ District Boundaries





Client:  
One Earth Solar Farm Ltd

Project:  
One Earth Solar Farm

Planning Inspectorate Scheme Ref:EN010159  
Environmental Statement Volume 2

Drawing Title:  
Landscape and Visual and  
Cultural Heritage Spatial ZOI

Drawing Number:  
Figure 18.5

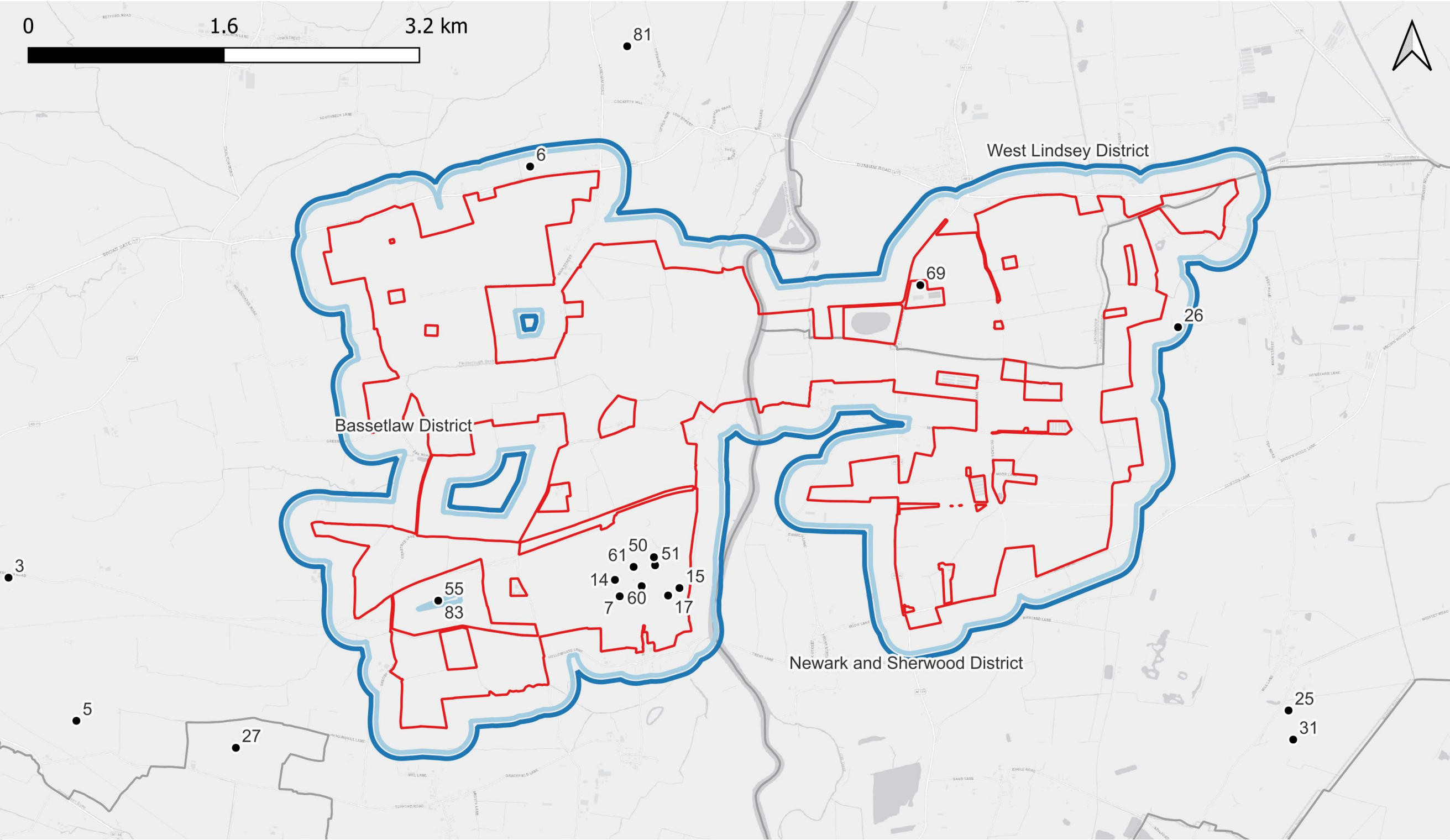
Drawn Date:  
2025-01-27

Rev:  
01

- Legend:
- Other Developments
  - Red-shaded area Landscape and Visual and Cultural Heritage ZOI (2km)
  - Red outline Red Line Boundary
  - Grey outline District Boundaries







Client:  
One Earth Solar Farm Ltd

Project:  
One Earth Solar Farm

Planning Inspectorate Scheme Ref:EN010159  
Environmental Statement Volume 2

Drawing Title:  
Figure 18.6: Air Quality Spatial  
ZOI

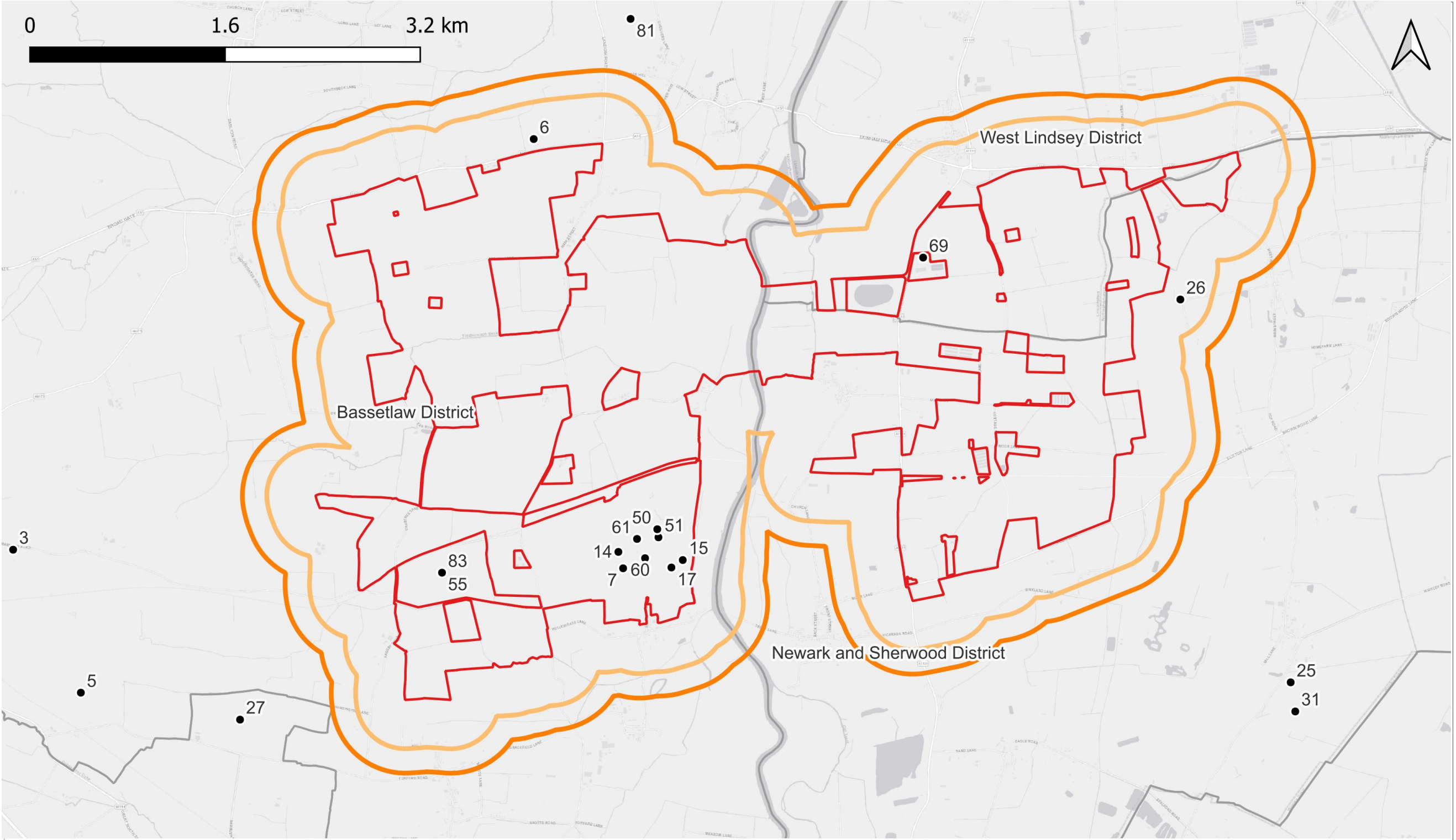
Drawing Number:  
EN010159/APP/6.20/18.6

Drawn Date:  
2025-01-27

Rev:  
01

- Legend:
- Other Developments
  - Air Quality - Construction Dust (250m)
  - Air Quality - Construction Traffic ZOI (200m)
  - Red Line Boundary
  - District Boundaries





Client:  
One Earth Solar Farm Ltd

Project:  
One Earth Solar Farm

Planning Inspectorate Scheme Ref:EN010159  
Environmental Statement Volume 2

Drawing Title:  
Figure 18.7: Noise and Vibration  
Spatial ZOI

Drawing Number:  
EN010159/APP/6.20/18.7

Drawn Date:  
2025-01-27

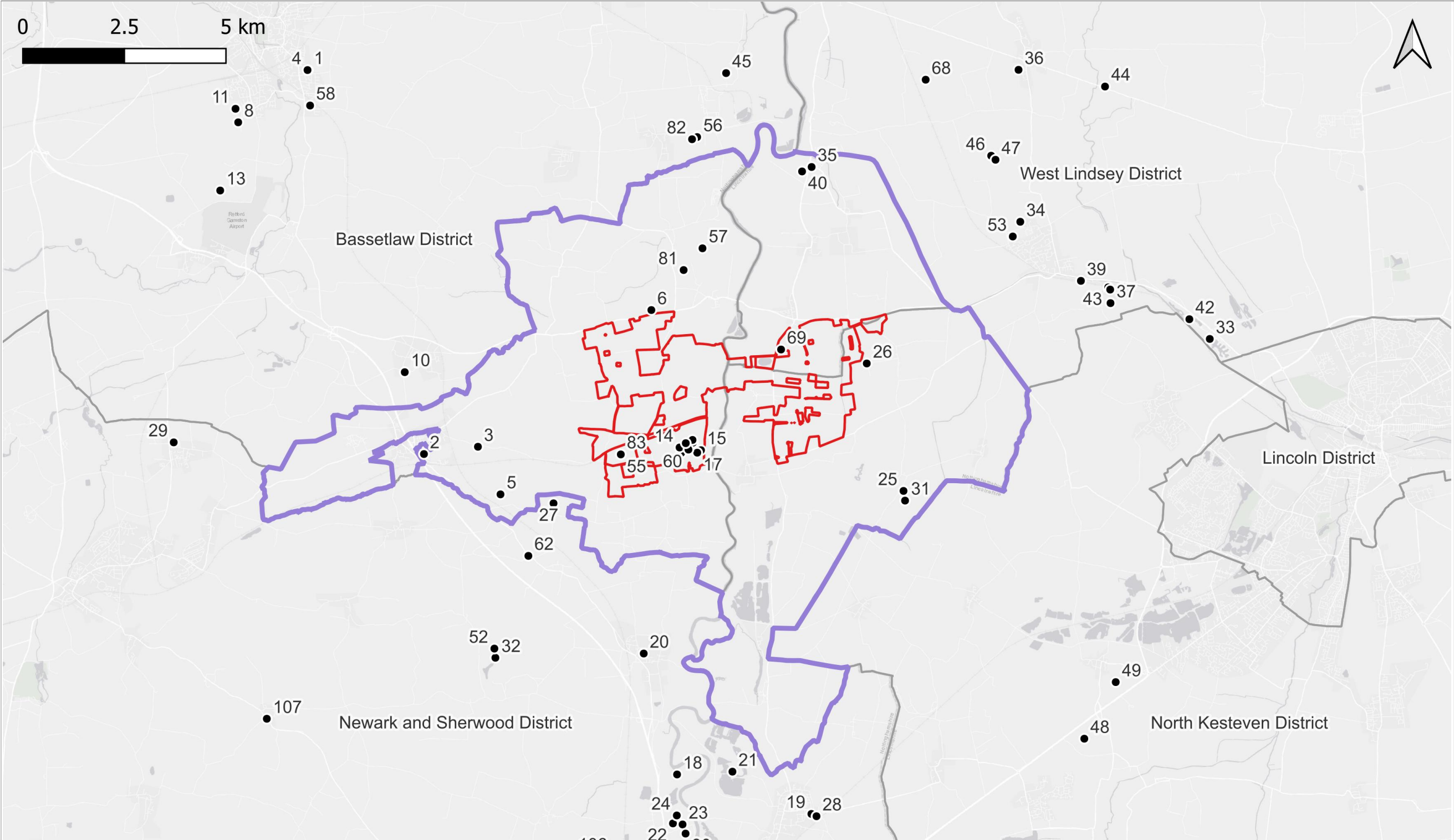
Rev:  
01

Legend:

- Other Developments
- ▭ Noise and Vibration - Construction Noise ZOI (400m)
- ▭ Noise and Vibration - Operational Noise ZOI (600m)
- ▭ Red Line Boundary
- ▭ District Boundaries







Client:  
One Earth Solar Farm Ltd

Project:  
One Earth Solar Farm

Planning Inspectorate Scheme Ref:EN010159  
Environmental Statement Volume 2

Drawing Title:  
Figure 18.8: Human Health and  
Socio-Economics ZOI

Drawing Number:  
EN010159/APP/6.20/18.8

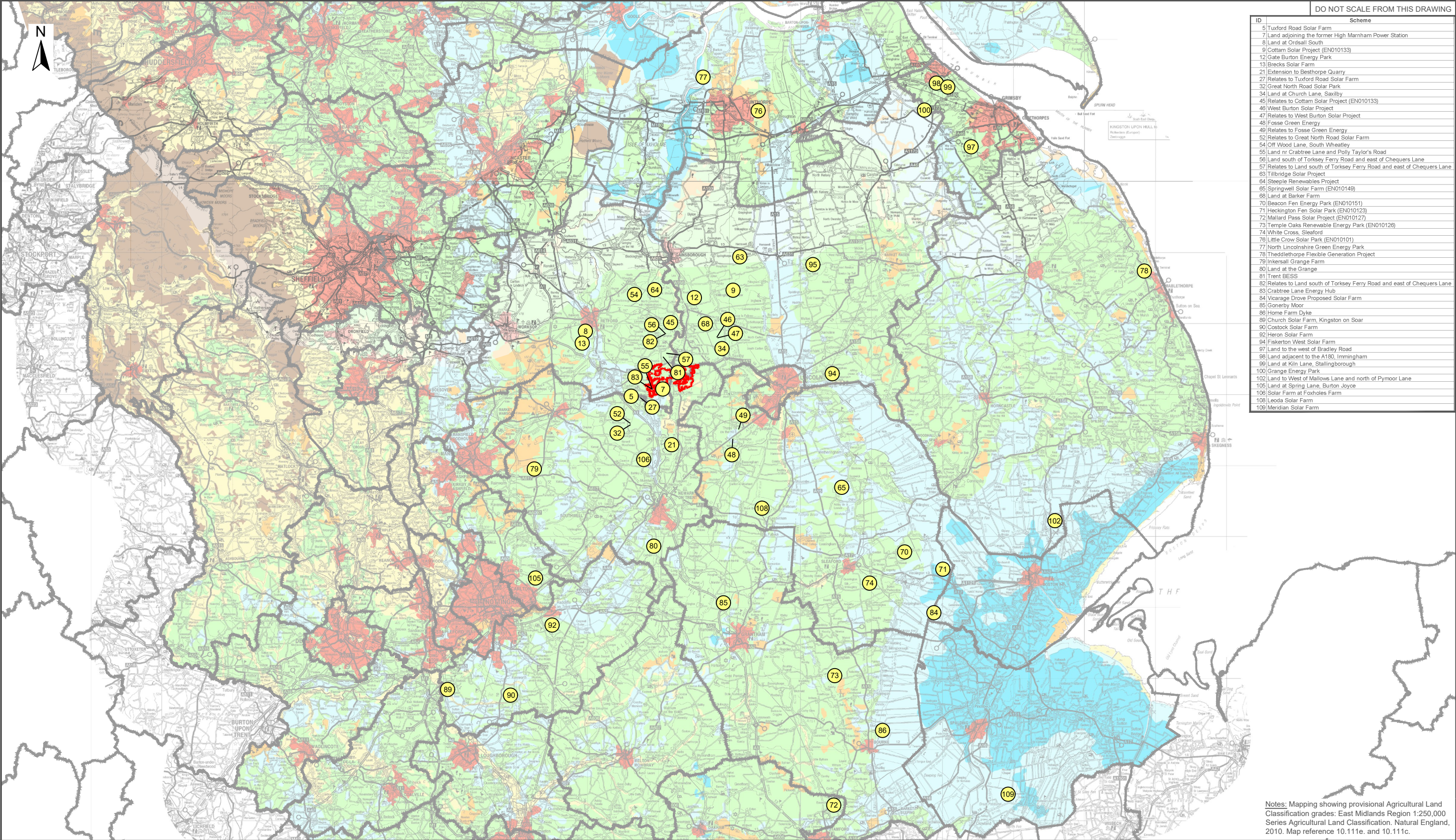
Drawn Date:  
2025-08-08

Rev:  
02

- Legend:
- Other Developments
  - Human Health and Socio-Economics ZOI (LSOA)
  - ▭ Red Line Boundary
  - ▭ District Boundaries







ID	Scheme
5	Tuxford Road Solar Farm
7	Land adjoining the former High Marnham Power Station
8	Land at Ordsall South
9	Cottam Solar Project (EN010133)
12	Gate Burton Energy Park
13	Brecks Solar Farm
21	Extension to Beshthorpe Quarry
27	Relates to Tuxford Road Solar Farm
32	Great North Road Solar Park
34	Land at Church Lane, Saxilby
45	Relates to Cottam Solar Project (EN010133)
46	West Burton Solar Project
47	Relates to West Burton Solar Project
48	Fosse Green Energy
49	Relates to Fosse Green Energy
52	Relates to Great North Road Solar Farm
54	Off Wood Lane, South Wheatley
55	Land nr Crabtree Lane and Polly Taylor's Road
56	Land south of Torksey Ferry Road and east of Chequers Lane
57	Relates to Land south of Torksey Ferry Road and east of Chequers Lane
63	Tillbridge Solar Project
64	Steeple Renewables Project
65	Springwell Solar Farm (EN010149)
68	Land at Barker Farm
70	Beacon Fen Energy Park (EN010151)
71	Heckington Fen Solar Park (EN010123)
72	Mallard Pass Solar Project (EN010127)
73	Temple Oaks Renewable Energy Park (EN010126)
74	White Cross, Sleaford
76	Little Crow Solar Park (EN010101)
77	North Lincolnshire Green Energy Park
78	Theddlethorpe Flexible Generation Project
79	Inkersall Grange Farm
80	Land at the Grange
81	Trent BESS
82	Relates to Land south of Torksey Ferry Road and east of Chequers Lane
83	Crabtree Lane Energy Hub
84	Vicarage Drove Proposed Solar Farm
85	Gonerby Moor
86	Home Farm Dyke
89	Church Solar Farm, Kingston on Soar
90	Costock Solar Farm
92	Heron Solar Farm
94	Fiskerton West Solar Farm
97	Land to the west of Bradley Road
98	Land adjacent to the A180, Immingham
99	Land at Kiln Lane, Stallingborough
100	Grange Energy Park
102	Land to West of Mallows Lane and north of Pymoor Lane
105	Land at Spring Lane, Burton Joyce
106	Solar Farm at Foxholes Farm
108	Leoda Solar Farm
109	Meridian Solar Farm

Notes: Mapping showing provisional Agricultural Land Classification grades: East Midlands Region 1:250,000 Series Agricultural Land Classification, Natural England, 2010. Map reference 10.111e. and 10.111c.



Client  
One Earth Solar Farm Ltd

Project Name  
One Earth Solar Farm

Planning Inspection Scheme Ref:EN010159

Environmental Statement Volume-2

Drawing Title  
Figure 18.09 Best and Most Versatile (BMV) Agricultural Land and Other Developments

Drawing Number  
EN010159/APP/6.20/18.9

Revision  
C03

Drawing Date  
12.08.2025

- Legend:
- Order Limits
  - Boundary of district borough unitary region
  - Other developments
  - Non-Agricultural Land
  - Other land primarily in non-agricultural use
  - Land predominantly in urban use

- Grade Description
- Excellent
  - Very good
  - Good to moderate
  - Poor
  - Very poor





**one earth**  
solar farm